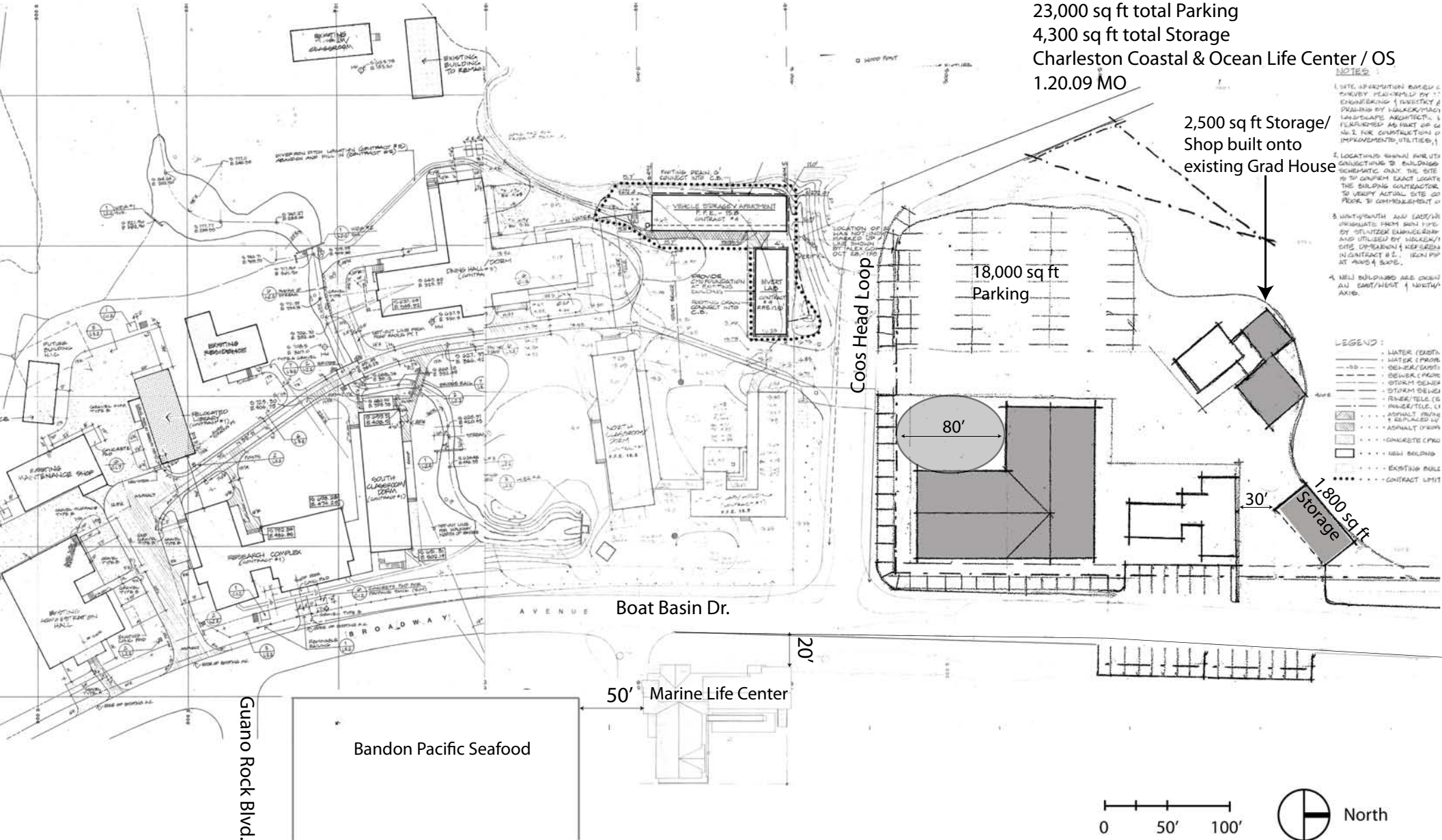


Charleston Center Option 1:

1 Building: 25,200 sq ft (2 floors)
 or - a 2-Phase Bldg: 15,400 sq ft; 9,800 sq ft
 (each 2 floors)

Remodel ODF&W as Incubator or other use
 23,000 sq ft total Parking
 4,300 sq ft total Storage
 Charleston Coastal & Ocean Life Center / OS
 1.20.09 MO



NOTES

1. SITE INFORMATION BASED ON PREVIOUS RECORDS BY ENGINEERING, SURVEY & PLANNING BY WALKER/PAUL LANDSCAPE ARCHITECTS, & FURNISHED AS PART OF CD No. 2 FOR CONSTRUCTION OF IMPROVEMENTS, UTILITIES, &
2. LOCATIONS SHOWN FOR UTILITY CONNECTIONS TO BUILDINGS INDICATED ONLY. THE SITE IS TO CONFIRM EXACT LOCATE THE BUILDING CONTRACTOR TO VERIFY ACTUAL SITE COORDINATE PRIOR TO COMMENCEMENT OF
3. NORTH/SOUTH AND EAST/WEST ORIENTATIONS FROM MAIN TURN BY UTILIZED ENGINEERING AND UTILIZED BY WALKER/PAUL LANDSCAPE ARCHITECTS IN CONTRACT # 2. LEGN FIP AT PARO & BAYE.
4. NEW BUILDINGS ARE ORIENTED AS EAST/WEST & NORTH/SOUTH.

- LEGEND :**
- WATER (EXIST)
 - WATER (PROP)
 - SEWER (EXIST)
 - SEWER (PROP)
 - STORM SEWER
 - STORM SEWER
 - POWER/TELE. (E)
 - ASPHALT (PROP)
 - ASPHALT (EXIST)
 - CONCRETE (PROP)
 - CONCRETE (EXIST)
 - NEW BUILDING
 - EXISTING BUILDING
 - CONTRACT LIMIT

2,500 sq ft Storage/
 Shop built onto
 existing Grad House

18,000 sq ft
 Parking

80'

1,800 sq ft
 Storage

30'

Boat Basin Dr.

50' Marine Life Center

Bandon Pacific Seafood

Guano Rock Blvd.

