



Fall 2009 Enrollment Fact Sheet Oregon University System

Based on enrollment at Fall Term 4th week 2009
November 10, 2009

Overview

- Enrollment growth (headcount) for the Oregon University System (OUS) in fall 2009 increased **significantly by 5.8% over fall 2008 to 91,580 students**, an increase of more than 5,000 students. This compares to a fall 2008 annual increase of 5.2% which was an increase of nearly 4,300 additional students over 2007.
- **Total enrollment is at an all time high** for the System, and for six of the seven OUS campuses, and the Oregon State University-Cascades branch campus in Bend. OUS's two-year growth of 11.3% and 9,331 students is the largest since the increase that followed the state funding infusion of the 1999-2001 biennium.
- **Undergraduate enrollment increased 6.7% to 75,443 students** in fall 2009, compared to **71,022** students in fall 2008, fueled primarily by the second straight year of strong growth in transfer students at 11.2%. The number of new admitted freshmen (does not include transfers) decreased slightly to 11,512 from 11,575 in 2008. Enrollment of freshmen from Oregon decreased by 0.8%, down from last year's increase of 3.3%.
- **Graduate student enrollment increased 3.9% to 16,137 students** in fall 2009, compared to 15,524 students in fall 2008. The increases in admitted students are at the master's, professional and doctoral levels, with doctoral enrollment growing 5.6%. These students are improving their employability during this downturn in the economy by seeking new skills and education through graduate programs.
- **Student diversity** continues to increase, with 17.8% of OUS students identifying themselves as other than white, non-Hispanic, up from 17.5% in fall 2008. Hispanic/Latino students had enrollment growth of 7.8% from fall 2008 to fall 2009. Asian/Pacific Islander student enrollment increased by 5.7%. African American student enrollment increased by 7.5% over the prior year. American Indian/Alaska Native student enrollment increased by 9.6%. Caucasian student enrollment increased by 4.2% from 2008 to 2009.
- **International student enrollment** grew by 8.4% in 2009 to an all-time high of 4,781 students, surpassing the all-time high of the previous year by 371 students. A 14.4% increase in international undergraduates accounted for the growth.

Table 1:		
10-Year Enrollment Trend for the OUS		
10-year increase=36.0%; 5-year increase=14.4%; 2-year increase=11.3%		
Year	Total Headcount Enrollment	Percent increase from prior year
1999	67,347	+3.6%
2000	69,508	+3.2%
2001	73,883	+6.3%
2002	78,111	+5.7%
2003	79,558	+1.9%
2004	80,066	+0.6%
2005	80,888	+1.0%
2006	81,002	+0.1%
2007	82,249	+1.5%
2008	86,546	+5.2%
2009	91,580	+5.8%

2009 Enrollment Fact Sheet

- Fall **FTE enrollment**¹ (Full Time Equivalent students), increased by 6.4% or 4,536 students systemwide to a total of 75,851 compared to an increase of 5.3% or 3,612 students in 2008. **Undergraduate FTE** increased by 6.6% and graduate student FTE increased by 5.4% from the prior year.
- The **ten-year growth** for the Oregon University System continues to **outpace national averages**, increasing 36.0% since 1999, up 24,233 students, compared to average national growth of 22.8% at public 4-year universities over the last 10 years. Four universities have 10-year increases exceeding this average: Portland State University increased 52.7% in that time; Eastern Oregon University increased 51.6%; Oregon Institute of Technology increased 39.6%, and Oregon State University increased by 36.8%

Enrollment Factors

- Economic decline and high unemployment encourages students to attend or stay in college to be prepared to enter or re-enter the workforce when the economy improves.
- Transfer student growth fueled undergraduate increases and follows double digit enrollment growth in Oregon's community colleges over the past two years. With two-year institutions' continued growth this year, the trend is expected to continue. Efforts by the Joint Boards of Education and the campuses to smooth the transition from community college to university appear to be having a positive impact on 4-year enrollment.
- Retention of first time freshmen (continuing to their sophomore year) increased strongly to an all-time high of 81.7% after dipping just below the 80% threshold last year.
- Nonresident transfer enrollment also increased as other states raise tuition, with some also capping enrollment as their state contributions to postsecondary education decline in the current down economy. Oregon has had relatively stable tuition increases, and out-of-state and international students continue to be attracted to OUS's quality institutions and programs.
- Oregon has also received national attention for its research and innovation, ranking 5th in the U.S. in per faculty federal research dollars, and its programs in sustainability, green energy, technology and other areas are gaining attention both nationally and internationally. This may also be a factor in the large increases seen in non-resident student enrollment.
- The Shared Responsibility Model of the Oregon Opportunity Grant that was implemented in fall 2008 increased grant aid for Oregonians and served a broader student population. Shifts in eligibility and award amounts between 2008 and 2009 may account for the slight decrease in new resident first-time freshmen in OUS.
- Federal financial aid programs increased both Pell grant awards and tax credits for those attending college, encouraging low-income students to apply to and attend college in record numbers in Oregon.

¹ Full Time Equivalence (FTE) measures the total credit-bearing activity of a campus. The full time equivalent for an undergraduate is 15 credit hours per term or 45 credit hours per year, for a master's or professional student the number is 12 credit hours per term or 36 credit hours per year, and for a doctoral student the number is 9 credit hours per term or 27 credit hours per year.

Additional Data Tables

Table 2:								
Total OUS Fall Headcount and FTE Enrollment, 2009 Compared to 2008								
(Fall 4th week)								
	Fall 2009		Fall 2008		Headcount Change		FTE Change	
	Headcount	FTE	Headcount	FTE	Number	Percent	Number	Percent
Eastern Oregon University	3,957	2,647	3,666	2,389	291	7.9%	258	10.8%
Oregon Institute of Technology	3,927	2,588	3,525	2,381	402	11.4%	207	8.7%
Oregon State University – Corvallis	21,969	19,951	20,320	18,487	1,649	8.1%	1,463	7.9%
Oregon State University – Cascades	611	354	510	280	101	19.8%	74	26.3%
Portland State University	27,972	19,996	26,587	18,753	1,385	5.2%	1,243	6.6%
Southern Oregon University	5,104	3,930	5,082	3,851	22	0.4%	80	2.1%
University of Oregon	22,386	21,689	21,507	20,762	879	4.1%	927	4.5%
Western Oregon University	5,654	4,697	5,349	4,412	305	5.7%	285	6.5%
Total	91,580	75,851	86,546	71,315	5,034	5.8%	4,536	6.4%

Source: OUS Institutional Research Services, Report ERTE-01 and ERCH-01, 11/03/09

Table 3:					
Fall 2009 4th Week Enrollment by Student Level					
Student Level	2009	2008	1999	Percent Change	
				One Year	Ten years
Admitted Undergraduates	70,649	66,206	49,693	6.7%	42.2%
Nonadmitted Undergraduates	4,794	4,816	4,213	-0.5%	13.8%
Total Undergraduates	75,443	71,022	53,906	6.2%	40.0%
Masters, other graduates	9,628	9,063	7,525	6.2%	27.9%
Law	558	539	509	3.5%	9.6%
Pharmacy *	363	356	79	2.0%	359.5%
Veterinary Medicine	211	196	67	7.7%	214.9%
Doctoral	2,828	2,678	2,312	5.6%	22.3%
Nonadmitted Graduates	2,549	2,692	2,949	-5.3%	-13.6%
Total Graduates	16,137	15,524	13,441	3.9%	20.1%
Total	91,580	86,546	67,347	5.8%	36.0%

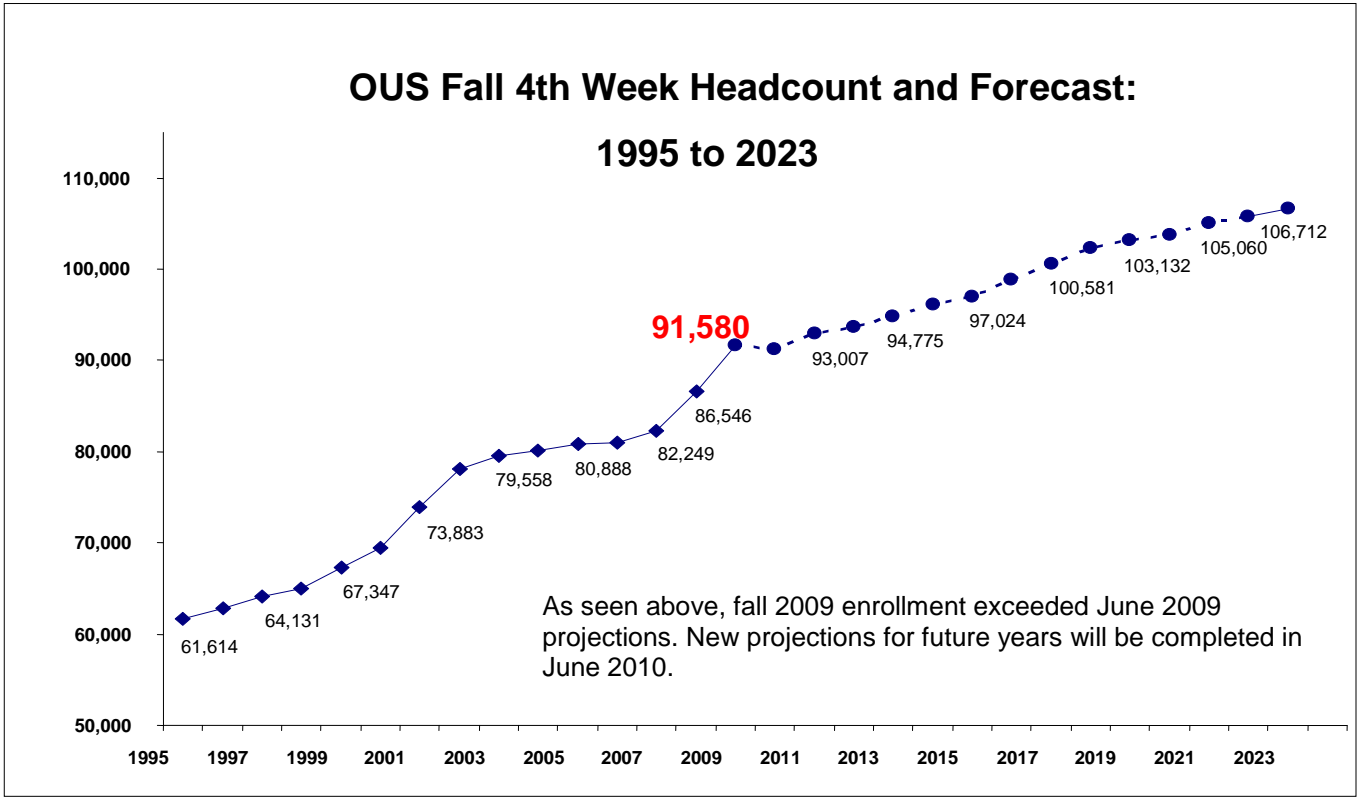
* NOTE: Pharmacy became a professional program in Fall 1999
Source: OUS Institutional Research Services, Report ERTE-01, 11/03/09

2009 Enrollment Fact Sheet

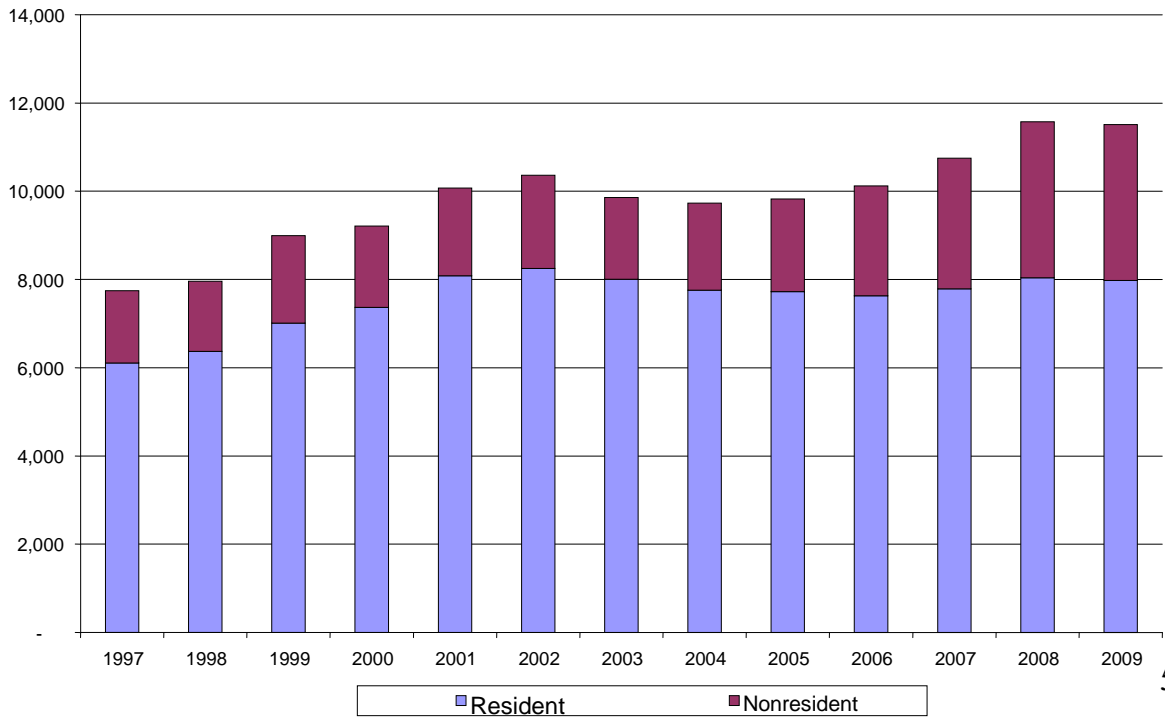
Table 4:									
Newly Admitted Undergraduates									
	Fall 2009			Fall 2008			Change		
	Fresh.	Trans.	Total	Fresh.	Trans.	Total	Fresh.	Trans.	Total
Eastern Oregon University	473	554	1,027	351	529	880	122	25	147
Oregon Institute of Technology	368	489	857	362	425	787	6	64	70
Oregon State University - Corvallis	3,506	1,521	5,027	3,191	1,221	4,412	315	300	615
Oregon State University - Cascades	-	140	140	-	100	100	0	40	40
Portland State University	1,676	3,142	4,818	1,768	2,906	4,674	-92	236	144
Southern Oregon University	692	495	1,187	709	480	1,189	-17	15	-2
University of Oregon	3,839	1,345	5,184	4,260	1,158	5,418	-421	187	-234
Western Oregon University	958	523	1,481	934	562	1,496	24	-39	-15
Total	11,512	8,209	19,721	11,575	7,381	18,956	-63	828	765
NOTE: 'Transfers' excludes postbaccalaureate undergraduates and graduate students							-0.5%	11.2%	4.0%
Source: OUS Institutional Research Services, First Time Freshmen Reports Table 4a, 11/03/09.									

Table 5:									
Newly Admitted Undergraduates, by Residency									
	Fall 2009			Fall 2008			Change		
	Res.	Nonres.	Total	Res.	Nonres.	Total	Res.	Nonres.	Total
Eastern Oregon University	706	321	1,027	626	254	880	80	67	147
Oregon Institute of Technology	638	219	857	607	180	787	31	39	70
Oregon State University - Corvallis	3,859	1,168	5,027	3,535	877	4,412	324	291	615
Oregon State University - Cascades	130	10	140	96	4	100	34	6	40
Portland State University	3,699	1,119	4,818	3,486	1,188	4,674	213	-69	144
Southern Oregon University	761	426	1,187	821	368	1,189	-60	58	-2
University of Oregon	3,152	2,032	5,184	3,204	2,214	5,418	-52	-182	-234
Western Oregon University	1,240	241	1,481	1,200	296	1,496	40	-55	-15
Total	14,185	5,536	19,721	13,575	5,381	18,956	610	155	765
NOTE: 'Transfers' excludes postbaccalaureate undergraduates and graduate students							4.5%	2.9%	4.0%
Source: OUS Institutional Research Services, First Time Freshmen Reports Table 4a, 11/03/09.									

Additional Graphs



Newly Admitted Freshmen Fall Term: 1997 to 2009



Campus Briefs

Eastern Oregon University

EOU headcount increased 7.9% this fall to 3,957, up from 3,666 in 2008. Enrollment was fueled by successfully recruiting both resident and nonresident freshmen, with a 34.8% increase in new freshmen over fall 2008, yielding the largest incoming freshman class ever. New transfer admits are also up in both resident and nonresident students, as are admitted graduates. Carrying loads are up more than headcount with the FTE total increasing by 10.8%, indicating more full time students, likely aided by promoting on-campus life. Retention is up with additional campus efforts in orientation and early alert programs to help students stay on track. The enrollment represents another all-time high for Eastern.

Oregon Institute of Technology

OIT has attracted new students with their offerings in Allied Health, as well as their Engineering and Engineering Technology programs. New transfer students increased more than freshmen, new nonresidents reached 452 students compared to 279 in 2008. Retention also was strong. With programs extending into the Portland area, Seattle, the region's high schools, and distance education, OIT continues to bring education to the students. It is likely that OIT's high placement rate of its graduates is especially appealing in this economy. Allied Health is one of the few private sector areas experiencing new job growth.

Oregon State University – Corvallis

OSU far surpassed its projected enrollment for 2009, with an increase of 8.1% or 1,649 students in a single year. Newly admitted student enrollment grew 14.9% over fall 2008, with growth in nearly every area, and dramatic growth among nonresidents, especially undergraduates. The cohort of new students totaled 7,076 students, substantially larger than any in the past. First-year retention was also stronger than anticipated at 85.4%. International student enrollment reached 1,063 students, reflecting OSU's strong reputation throughout the Pacific Rim.

Oregon State University - Cascades Campus (Bend)

Cascades campus topped 600 students for the first time after exceeding 500 for the first time last year, growing 19.8% to 611 students. Growth continued to be strong in resident transfers with their Central Oregon Community College partnership filling the pipeline. This year the graduate enrollment grew by 57.7% with increased offerings in Education.

Portland State University

PSU enrollment increased by 1,385 students, or 5.2%, over fall 2008. Declines in first time freshmen were offset by strong increases in resident transfer students, with newly admitted resident transfer students exceeding 2,500, by far the most of any OUS institution and an all-time high for PSU. Nonresident growth was due mainly to retention. Graduate enrollment was aided by a 12.9% increase in doctoral students, and Master's growth was also strong at 5.5%. Declines in nonadmitted students held total graduate growth to 3.7%. International student enrollment increased by 111 students, or 6.4%, to 1,798, with most of the increase at the undergraduate level.

Southern Oregon University

Headcount at Southern Oregon increased slightly to 5,104 students this fall, up from 5,082 last year. New graduate student enrollment reached an all-time high with more than 300

2009 Enrollment Fact Sheet

new students for the first time. New first time resident freshmen admits continue to decline, down 12.2% from fall 2008. Nonresident growth of 9.2% is due to a combination of retention and additional students from nearby states.

University of Oregon

UO headcount grew by 4.1% this fall over fall 2008, to 22,386 students. Declines in first time freshmen were offset by increases in transfer and graduate students. New nonresidents declined 3.5%, however a high retention rate of freshmen admitted last year including a large nonresident cohort, also contributed to overall growth of 13.2% in nonresident undergraduates. Doctoral enrollment grew by 3.5%, as did the professional program in Law. International student enrollment grew to 1,465, up 17.3% from fall 2008, with the growth primarily at the undergraduate level.

Western Oregon University

Headcounts at WOU increased 5.7% to 5,654, up from 5,349 at this time last year. New first time freshmen enrollment from Oregon increased by 7.9% to 819. The entering class of new students grew by 3.1% with resident growth countering an overall decline in new nonresidents. Western continues to maintain its pipeline of international students, though total international enrollment is slightly down to 283 from last year's high of 305.

For More Information

Contact Bob Kieran, OUS Assistant Vice Chancellor of Institutional Research and Planning, at 541-346-5758 or bob_kieran@ous.edu; or Di Saunders, OUS Director of Communications, at 503-725-5714 or diane_saunders@ous.edu. Also see the **Enrollment Watch** section of the OUS website at www.ous.edu.



Oregon University System

Office of the Chancellor ☐ **503-725-5700** ☐ **www.ous.edu**

11-10-09_bk/dls