



To the **UO?**

There are ***better*** ways to go.

Bicycle & get the closest parking spot.

Ride the Bus for free.

Carpool, pay less & get priority spaces.

Park and Ride the bus for **free**.

Walk and we'll all breathe easier.

These can help you get you there:

Single day parking permits

Guaranteed ride home (for employees)

Designated driver shuttle (for students)

Safe ride

Carpool:



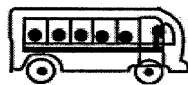
Public Safety sells carpool parking permits for about **half of the cost** of a regular permit. Spaces are more conveniently located than standard parking permits. More information about carpool permits is available at: http://safetyweb.uoregon.edu/parking/carpool_parking.htm

Bus:



Any UO faculty member, staff member or student can ride any LTD bus at any time **free of charge!!!** Just show your UO ID card when you get on a bus. Buses can accommodate bicyclists with an easy to use bike rack. Maps of routes and timetables are available on any LTD bus or in the EMU (in book form) or on the web at: <http://www.ltd.org/>

Park and ride:



Sometimes you may have to drive your kids to school or run other errands with the car, but you don't have to drive all the way to campus and pay to park. LTD provides 25 Park and Ride locations where you can park your car **free of charge** and get on a bus heading directly to the UO campus. For locations please visit: http://www.ltd.org/site_files/options/park_and_ride.html

Walk:



For those who live relatively close to campus walking is a natural, or combine this with any of the other modes. It's great exercise and very low cost.

Bike:



Bike parking is **free and ample and close** to your class or office. There are covered bike racks for wet weather. For longer biking commutes all LTD buses offer bike racks. <http://safetyweb.uoregon.edu/bicycling/park.htm>

Here's help:



Single-Day Permits:

If you usually ride your bike, walk, or take the bus but occasionally need to drive, \$2 daily permit allows you to park in University lots. You purchase them in advance and scratch off the date when you want to use one. For comparison, a full-year permit starts at \$155. These permits are sold at the Public Safety office and at the kiosk outside Oregon Hall. <http://safetyweb.uoregon.edu/parking/permits.htm>

Guaranteed ride home:

UO faculty and staff who come to campus via bus or bike have available a convenient and reliable mode of transportation in the event of an emergency (ill/injured child, family member, etc.). You simply have to call Public Safety. They will issue you a **voucher to pay for a taxi ride anywhere** you need to go in Eugene/Springfield, including multiple stops. For more information go to: <http://safetyweb.uoregon.edu/general/gridehome.htm>

ASUO designated driver shuttle:

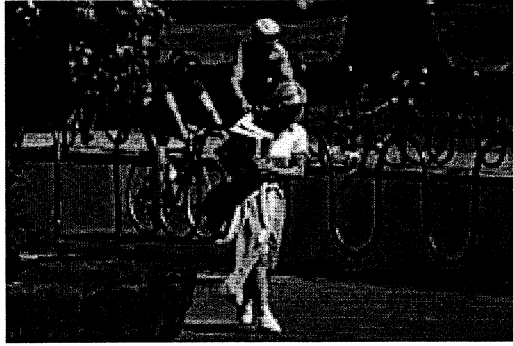
This is a free shuttle service that allows intoxicated students and their friends a safe alternative to driving drunk. It's also offered to students needing a safe ride home. 346.7433.

<http://gladstone.uoregon.edu/~asuodds>

Saferide:

The mission of project saferide is to provide a free and reliable shuttle service to women. Project saferide is committed to maintaining the safety of every student, staff, and faculty member at the university of oregon.

saferide@gladstone.uoregon.edu



Did You Know ?

- The average commute time for UO Faculty and Staff is 17 minutes for those who drive alone and only 2 minutes more, 19 minutes, for those who carpool. The average commute for those who bike is 17 minutes. (from Jan.2001 LTD survey)
- Over half of the 3,800 faculty and staff members drive alone to the UO every business day, and over half of UO faculty and staff report being frustrated by automobile parking. (from Jan.2001 LTD survey)
- Commuter time is predicted to increase 400% in US cities by the year 2004. (Bicycling Magazine, May 1991)

**This informational flyer is provided by
the University of Oregon
Environmental Issues Committee.**

